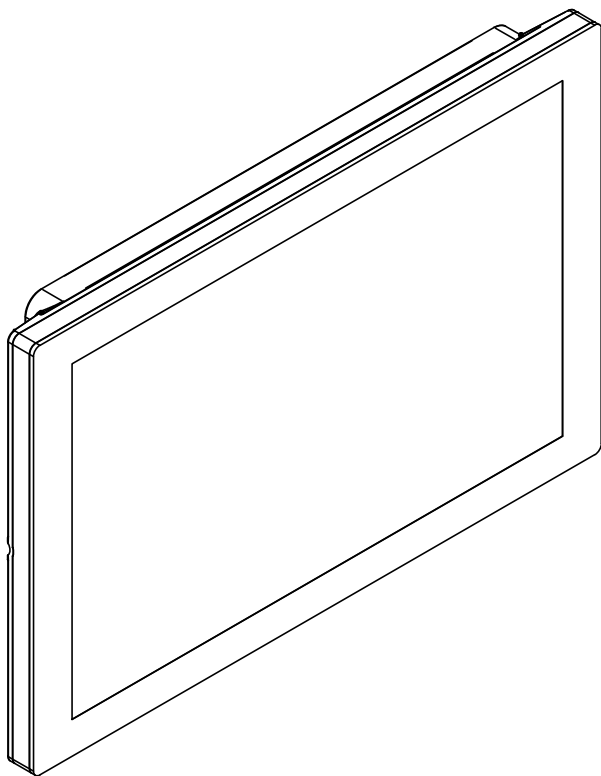


a sound relationship
Russound



XTS7
Wall-mounted Touchscreen

INSTALLATION GUIDE

The **Russound XTS7** is an elegant, in-wall touchscreen with a 7" display and a quad-core processor running the Android™ operating system that enables you to install and run apps from the Google Play Store. The XTS7 is pre-loaded with the Russound App, perfect for controlling your compatible Russound audio system, but the XTS7 is free to control any other smart home devices in your home such as your lights, shades, etc.

The XTS7 comes with 16GB of storage for additional apps and there is a microSD card slot that allows expansion for up to an additional 256GB of storage.

The XTS7 offers unmatched convenience in controlling your smart home. The wall-mounted design is always available for your use, meaning that you'll never have to search for your phone or tablet in order to start controlling devices in your home. You can keep your most important apps like those for your lights and music on the home screen, instantly available for your use.

The XTS7 is also easy to install and supports both wired and wireless network connections. A PoE (Power over Ethernet) connection simplifies the wiring by allowing a single network cable to carry both the network data and the power to the touchscreen. If a Wi-Fi connection is preferred, the XTS7 also offers a 12V DC connection to supply the required power.

HIGH RESOLUTION DISPLAY

The XTS7 uses a 7" 800 x 1280 display capable of reproducing 16.7 million colors. It features projected capacitive touch technology, the latest touch technology used in smartphones and tablets, enhancing its responsiveness and performance.

ALWAYS AVAILABLE CONTROL

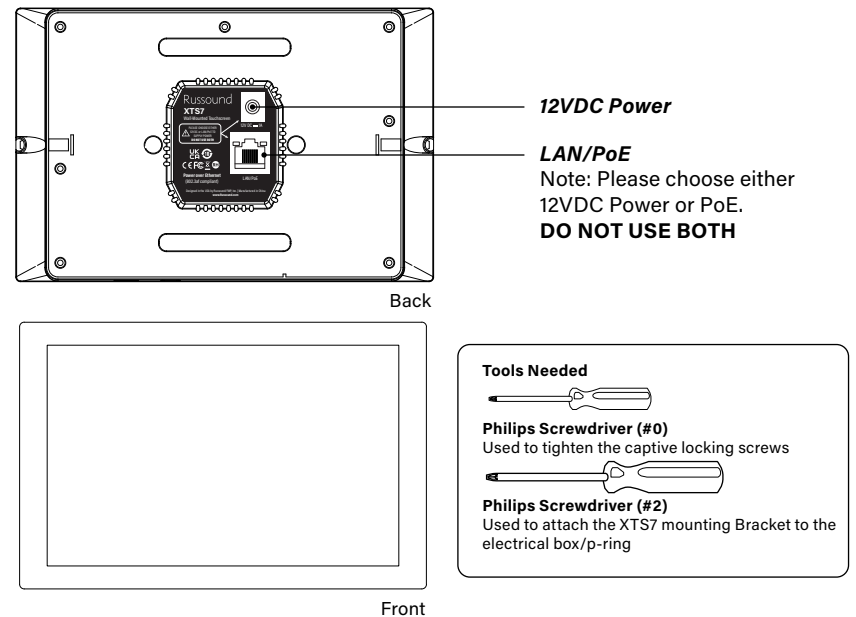
By mounting a touchscreen on the wall at the location of your choosing, your smart home is now instantly more accessible. It's no longer necessary to fumble for your phone or tablet before being able to turn up the volume of your favorite music, mute the sound when you need, or adjust the lighting in the room. The XTS7 is pre-loaded with the Russound app for controlling your compatible Russound audio system, but it is also ready to install your favorite* apps from the Google Play Store.

WIRED OR WI-FI

The XTS7 is 802.11 b/g/n compatible with an integrated 2.4GHz antenna. Use a Wi-Fi connection whenever a wired ethernet connection is not possible to achieve. A wired ethernet connection can utilize a single-wire connection to a PoE switch or PoE injector, simplifying the installation while minimizing the risk of any radio interference or poor Wi-Fi reception. The XTS7 will work with both EIA/TIA 568A and 568B wiring. When using Wi-Fi, a 12VDC@1A power connection can be used instead of PoE. Only a single power connection is required, either PoE or 12VDC. Inadvertently connecting both will not affect the unit as the PoE connection will not draw power if the 12VDC connection is active.

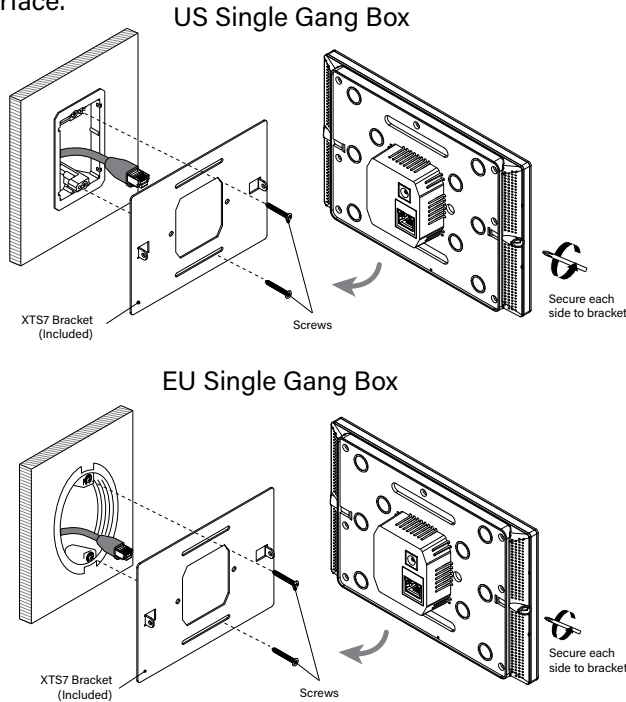
ENHANCED SECURITY

Because the XTS7 runs Android, you are free to use the native Android security features such as a PIN-protected screen lock. This is ideal for commercial installations where access to the apps on your XTS7 should be protected from wide access and only operate to designated persons with the PIN code.



STEP 1

Install the electrical box or P-ring. The typical recommended mounting height for a wall-mounted touchscreen is for the center of the electrical box or p-ring to be at 59" (150cm) from the finished floor height. This may be adjusted for user preference, but the 59" height is recommended to accommodate most users. Make sure that the electrical box/P-ring is mounted level and is flush to the wall surface.



STEP 2

Attach the included XTS7 mounting plate to the electrical box or P-ring using the supplied screws. Please note the orientation below. The XTS7 can only be installed in landscape orientation. The plate should be installed so that the two attachment prongs at either end are facing into the room. These prongs will be used for attaching the XTS7 to the mounting plate.

For a 1-gang US box or P-ring, two mounting screws will be used, one at the top and one at the bottom, centered horizontally on the mounting bracket.

For a 2-gang US box or P-ring, four mounting screws will be used, as shown below.

For a 60mm Euro box, two mounting screws will be used, with the two horizontal screwholes being recommended.

STEP 3

Connect the PoE Ethernet cable or the 12VDC power cable from the electrical box or P-ring to the rear of the XTS7. Before attaching the XTS7 to the wall, make sure that touchscreen powers up properly. The Russound logo will appear during bootup and if this is a new installation, the touchscreen will enter the standard Android setup process. This can be completed once the touchscreen is fully mounted.

STEP 4

Attach the touchscreen to the mounting bracket by aligning the mounting brackets prongs to the corresponding slots on the rear of the XTS7. Use a #0 Phillips screwdriver to tighten the two locking screws on the rear sides of the XTS7 until the touchscreen is tightly mounted to the bracket.

STEP 5

Device Setup

When powered up for the first time, the XTS7 will enter setup mode. If using a wired network connection, the XTS7 should already be connected to the internet and will proceed to the next step. If using a Wi-Fi connection follow the on-screen prompts to connect your XTS7 to the desired Wi-Fi

Wireless Installation Note: If a Wi-Fi connection is desired, make sure to test the Wi-Fi signal strength at the proposed mounting location prior to cutting any wall openings. The Wi-Fi signal strength can be checked using any of the commonly available Wi-Fi signal strength apps. If the Wi-Fi signal is not strong enough at the proposed mounting location, consider using a wired ethernet connection or enhancing the Wi-Fi in the mounting area.

Wired Network Installation Note: If a wired network connection is being used, keep in mind that the XTS7 uses a dynamic DHCP network address supplied by your router. When a more permanent IP address is required, a DHCP-reservation may be used on a compatible router.

COPY APPS & DATA

The setup process will ask if you want to copy apps and data from an existing account. We recommend using the option "Don't copy". This is for several reasons. First, phones or tablets typically have much more storage space than a wall-mounted touchscreen requires and you can exceed the amount of storage when attempting to copy all existing apps and data. Second, and most importantly, the key advantage of the XTS7 is having a simplified control interface with only a small number of apps that are used to control your smart home. Keeping the number of apps installed to a minimum means that the apps that you want to use are always easily accessible from the home screen. For these reasons, we recommend selecting "Don't Copy".

SIGN IN

The setup process will now show a sign-in screen to sign into your Google account. If you are the homeowner, feel free to sign in with your Google account credentials or to create a new Google account. If you are NOT the homeowner, select "Skip" so that the homeowner can complete this step later. For smarthome control, especially if using Google Assistant, it is important that the account logged into Google be the same account that is associated with all of the smarthome devices.

RESTORE DATA FROM AN OLD DEVICE

As mentioned previously, the functions of your XTS7 touchscreen are quite different from your smartphone or tablet. We recommend selecting "Don't restore" so that unneeded data is not transferred to your XTS7 wall-mounted touchscreen.

GOOGLE SERVICES

You may be asked if you would like to back up your XTS7 to your Google Drive account. This can simplify recovery or setting up additional XTS7 touchscreens in your home. We recommend backing up your XTS7 to your Google Drive account.

SET SCREEN LOCK

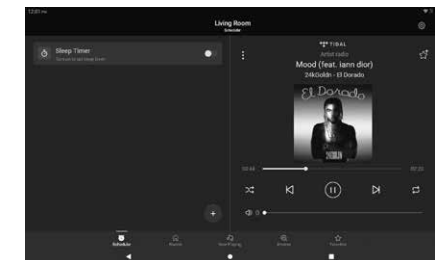
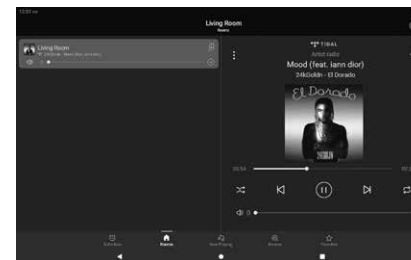
On this screen, you can select a PIN code (minimum of 4 digits) to use to control access to your XTS7. If you do not wish to use a PIN code, simply select "Skip". Keep in mind that anyone who has access to the XTS7 can enter the settings menu and create a PIN in the future. If you would like to prevent this from happening, set a secure PIN.

ANYTHING ELSE?

On this screen, you can choose to change the default font size as well as select a different wallpaper for your new XTS7. These can also be changed at any time in the future through the Android settings menu. Feel free to change them now, or select "No thanks" to continue.

Setup of your XTS7 is now complete.

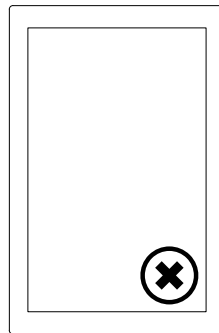
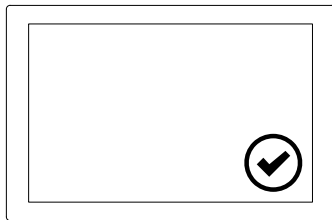
The XTS7 has the Russound app pre-installed. You can navigate to the Google Play Store to download and install your favorite* apps to your XTS7 now.



SPECIFICATIONS

Processor	Quad-core 64-bit Cortex™ A53
RAM	2GB
Touchscreen Display	7" TFT
Display Resolution	800 x 1280 (16.7M Colors)
Screen Brightness	400 nits
Storage Capacity	16GB w/11.4 GB Free, Expandable via MicroSD
Network Connectivity	Wired or Wi-Fi (802.11 b/g/n - 2.4GHz)
Physical Connections	MicroSD Slot for Storage Expansion
Power Requirements (Power Supply Not Included)	PoE (802.3af) or 12VDC @1A
Mounted Dimensions (LxHxD)	6.91" x 4.53" x 0.65" (17.6 cm x 11.5 cm x 1.65 cm)
Depth behind wall	.75" (1.9 cm)
Weight	1.2 lbs (0.55 kg)

* The XTS7 is designed to run apps designed for smart home control and not for apps such as resource-intensive games. All installed apps must be able to run in Landscape Orientation.



LIMITED WARRANTY

The **Russound XTS7** is guaranteed for one (1) year from the date of purchase against all defects in materials and workmanship. During this period Russound will replace any defective parts and correct any defect in workmanship without charge for either parts or labor. For this warranty to apply, the unit must be installed and used according to its written instructions. If service is necessary, it must be performed by Russound. Russound assumes no responsibility for defects resulting from abuse or servicing performed by an agency or person not specifically authorized in writing by Russound. Damage to or destruction of components due to improper use voids the warranty. In these cases, the repair will be made at the owner's expense. Accidental damage and shipping damage are not considered defects under the terms of the warranty. To return for repairs, the unit must be shipped to a repair facility designated by Russound at the owner's expense, along with a Return Authorization number and documentation explaining the nature of the service required. Any product returned without prior written permission will be returned to sender. Russound sells products only through authorized Dealers and Distributors to ensure that customers obtain proper support and service. Any Russound product purchased from an unauthorized dealer or other source, including retailers, mail order sellers and online sellers will not be honored or serviced under existing Russound warranty policy. Any sale of products by an unauthorized source or other manner not authorized by Russound shall void the warranty on the applicable product.

RUSSOUND

200 International Drive, Suite 155
 Portsmouth, NH 03801 USA
 Tel 603.659.5170

WARRANTY ADDRESS

Russound
 Attn: RA# (Insert your RA number here)
 1955 Wehrle Dr
 Williamsville NY 14221

www.russound.com
 e-mail: tech@russound.com



a sound relationship

Russound

©2022 Russound/FMP, Inc. All rights reserved.
All trademarks are the property of their respective owners.
Specifications are subject to change without notice 07.10.22 REV1.

